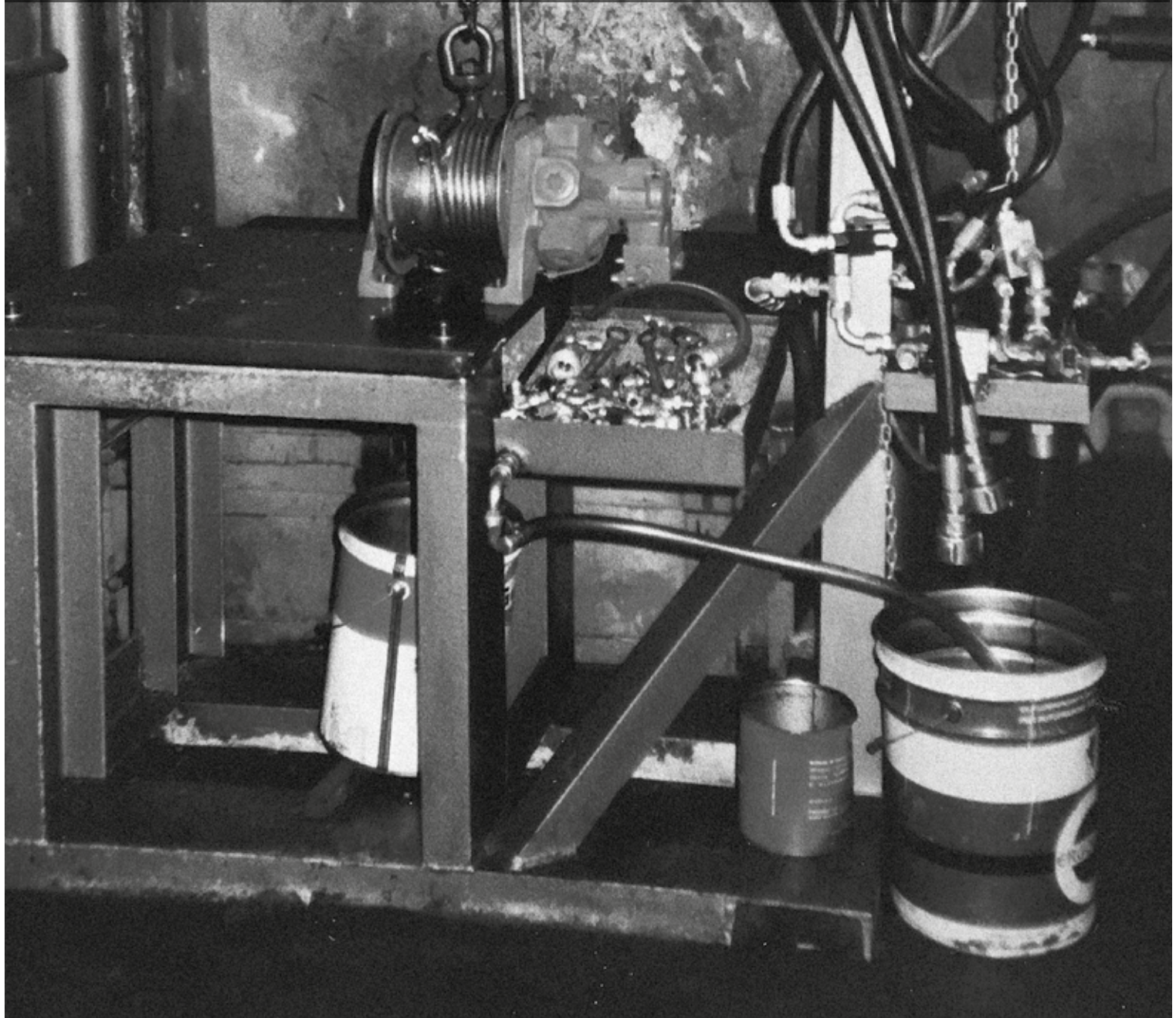


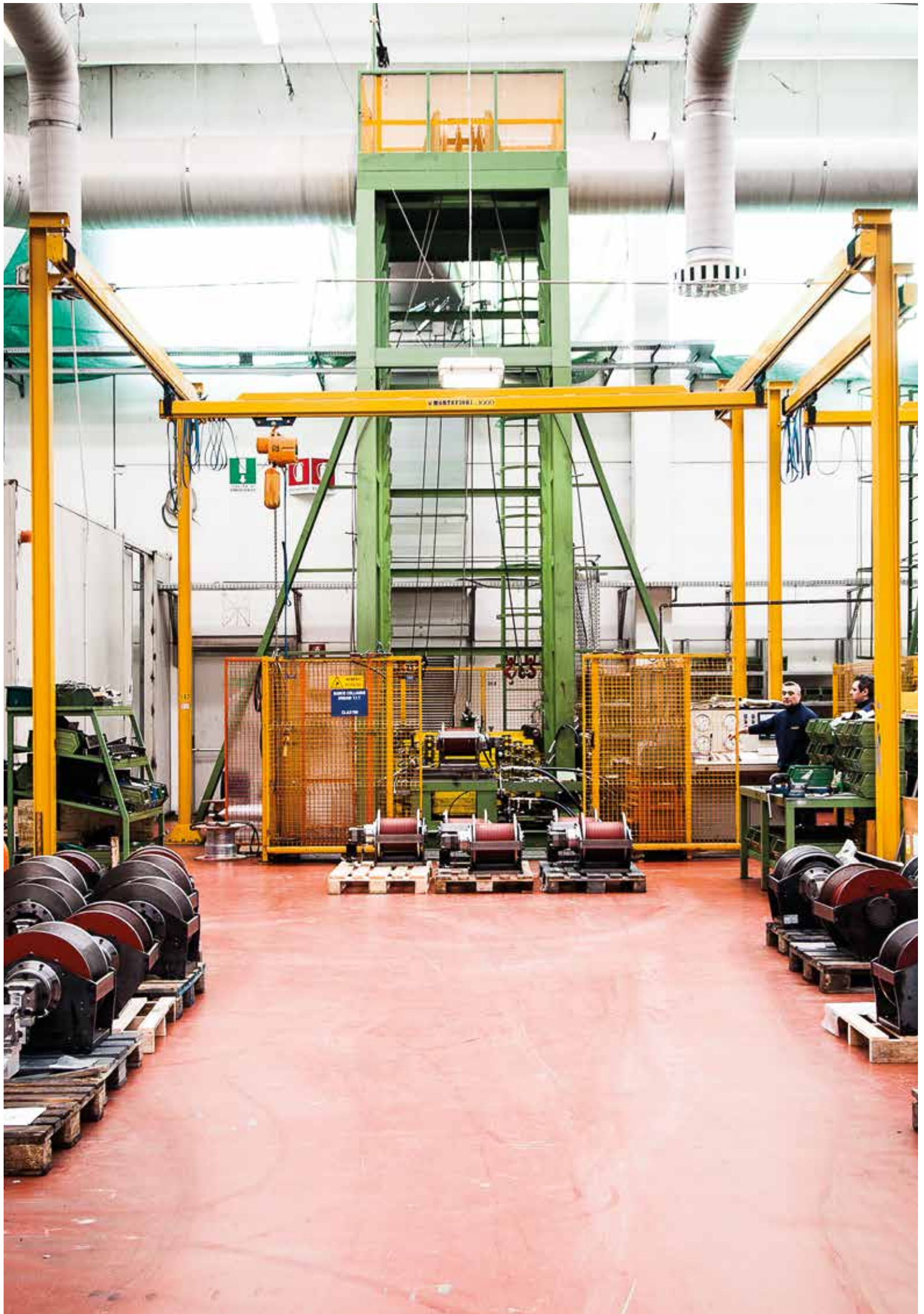
Dinamic Oil Headquarter Bomporto Italy



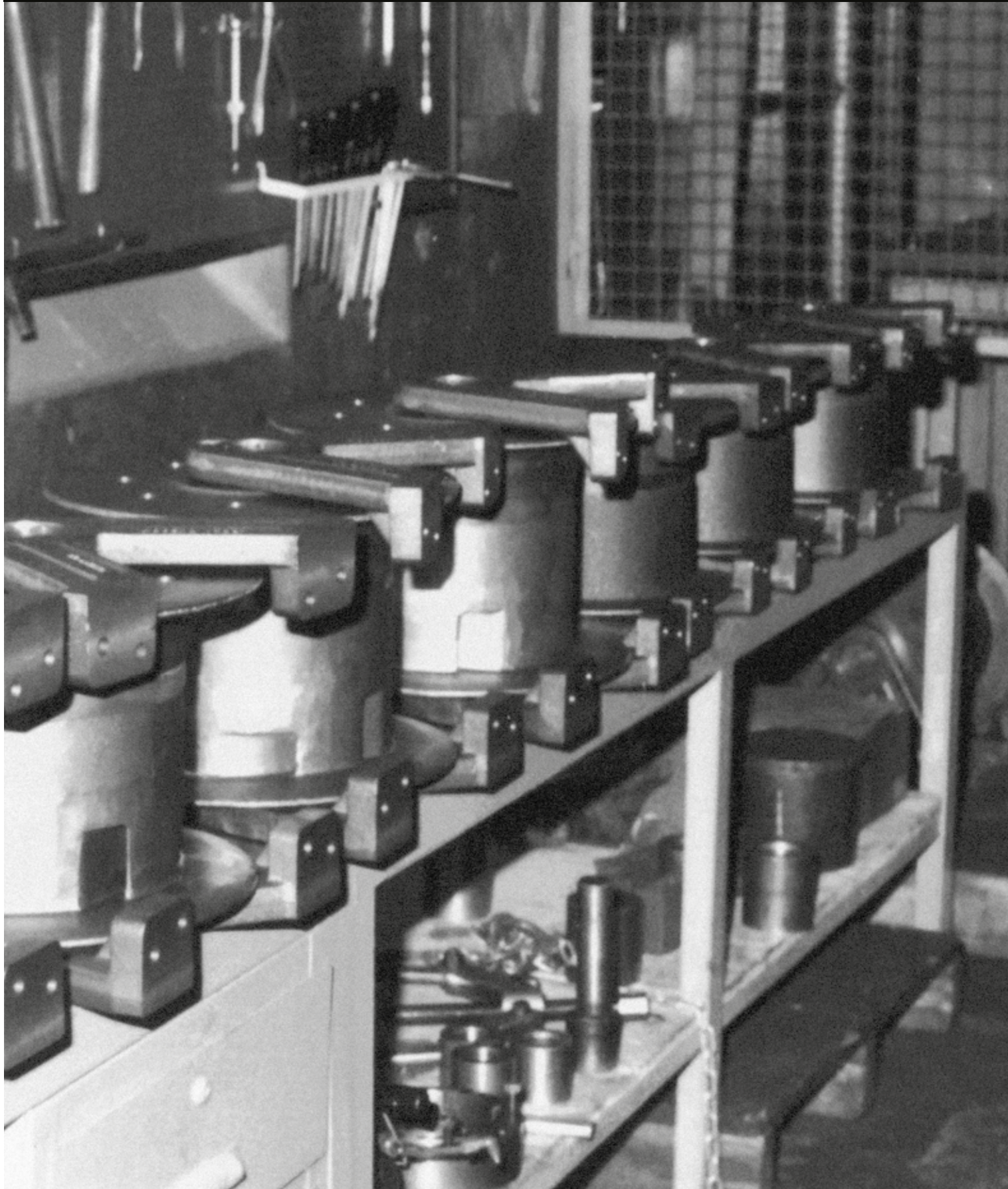
Hoisting Solutions since 1970

For more than 50 years Dinamic Oil has been designing and manufacturing a complete range of hoisting solutions with line pulls from 500 to 35,000 kg thanks to continuous research and development. The Company is customer focused and expertly matches the application requirements with its know-how and commitment to provide flexible and high quality products. Dinamic Oil's diverse range of winches are the result of the hard work and dedication of its skilled employees and a corporate philosophy based on communication and market analysis, attributes that are vital to meet the requirements of each hoisting application, such as drill rigs, marine and offshore hoists, and construction cranes. Over the years Dinamic Oil has repeatedly and successfully adapted its product to several domestic markets; the EU range, characterized by its highly technical design, is present all over Europe, India and in the Far East; the A series, designed in imperial dimensions and with special gear motors, was developed specifically for the US market; the Motor Drum range allows our customers to customize their hoisting solution, mainly addressing German and Chinese requirements; our rotating case gearboxes, the result of decades of experience in the marine market, are highly appreciated in Northern Europe. Dinamic Oil guarantees the safety of its products by dynamically testing each hoist that is manufactured: the tests are carried out on test bays up to 13 Ton in capacity located in Italy, Charlotte and India. In addition to our standard testing, product certificates or type approvals issued by the primary certifying entities can be requested for the majority of our models.





1970 Assembly Line



Today



Hoisting

Software

for the

World



g



whole

European Series

Dinamic Oil provides a full range of winches in compliance with European standards. All products are manufactured and tested at our HQ in Bomporto, Italy. The most common applications: mobile, drilling, offshore marine and construction.

Type	max line pull on the last layer	lifting pressure	Max lifting speed	Max oil flow	Rope Quantity
	daN	bar	m/min	l/min	m
NP					
NP05	400	155	61,5	30	53
NP08	630	155	37,5	30	46
NP10	920	165	28,5	30	30
NP12	1100	155	22,5	30	30
NP18	1130	180	33	40	51
NP19	1250	165	26,5	40	51
A					
A30	1100	155	66,5	76	30
A44	1530	170	56,5	76	51
A60	2180	185	45	75	33
A80	2645	175	36	45	80
P					
P6	600	115	40	40	57
P6/E	800	100	25	40	50
P9	900	145	46,5	55	68
P9/E	1170	150	38,5	55	55
P15	1600	170	46	75	57
P15/E	1950	175	37,5	75	48
CW					
CW08	800	170	79,5	60	56
CW10	1000	190	76,5	60	56
CW12	1200	185	63	60	56
CW13	1260	175	66	75	96
CW13R	1260	210	118	100	96
CW16	1550	170	53	75	96
CW16R	1550	210	96,5	100	96
CW20	2000	175	41	75	63
CW20R	2000	225	81,5	100	63





Type	max line pull on the last layer	lifting pressure	Max lifting speed	Max oil flow	Rope Quantity
	daN	bar	m/min	l/min	m
S					
S15	1570	205	53	60	57
S19	1900	205	56	75	48
S20	2000	225	81	100	76
S25	2500	235	67,5	100	66
S30/2	3000	215	50,5	100	88
S35/2	3500	210	41	100	83
S45/2	4500	230	35	100	103
S45V/2	4500	255	75	190	103
S61	6000	255	64,5	220	119
S81	7800	265	51	220	120
S101	10000	285	50	250	136

SE					
SE20/3	1875	225	86,5	100	94
SE20/3V	1875	215	120	150	94
SE25/3	2500	235	67,5	100	63
SE25/3V	2500	235	105	160	63
SE27/3	2750	200	51,5	100	63
SE27/3V	2750	220	105	190	63
SE30	3000	215	50,5	100	88
SE30V	3000	220	93	190	88
SE35	3500	210	41	100	83
SE35V	3500	220	79	190	83
SE45	4500	230	35,5	100	103
SE45V	4500	260	74	190	103
SE60/2	6000	240	61	220	119
SE80/2	7800	255	49,5	220	120
SE100/3	10000	275	46,5	250	136

SRD					
SRD A60	6200	265	66	220	121
SRD B80	8000	285	55	220	129
SRD C100	10000	275	49,5	260	147
SRD D120	12000	285	41	250	183
SRD E150	15000	290	33	250	183
SRD F180	18000	295	28	250	183
SRD G230	23000	290	21	250	183

Type	typical line pul on the first layer	ø d (suggested cable)
	daN	mm
WDD SERIES		
WDD A75	7500	18
WDD B100	10000	20
WDD C130	13000	22
WDD D155	15500	24
WDD E190	19000	26
WDD F230	23000	28
WDD G300	30000	32

Mobile Applications



● P9

● CW08

● S15

● WDD



SRD A60



TW4



Hoisting Winch



Trolley Winch

Marine & Offshore Applications



● SW47 EL

● SRD A60

● S45V



Man Riding



SR30



WDD 170

American Series

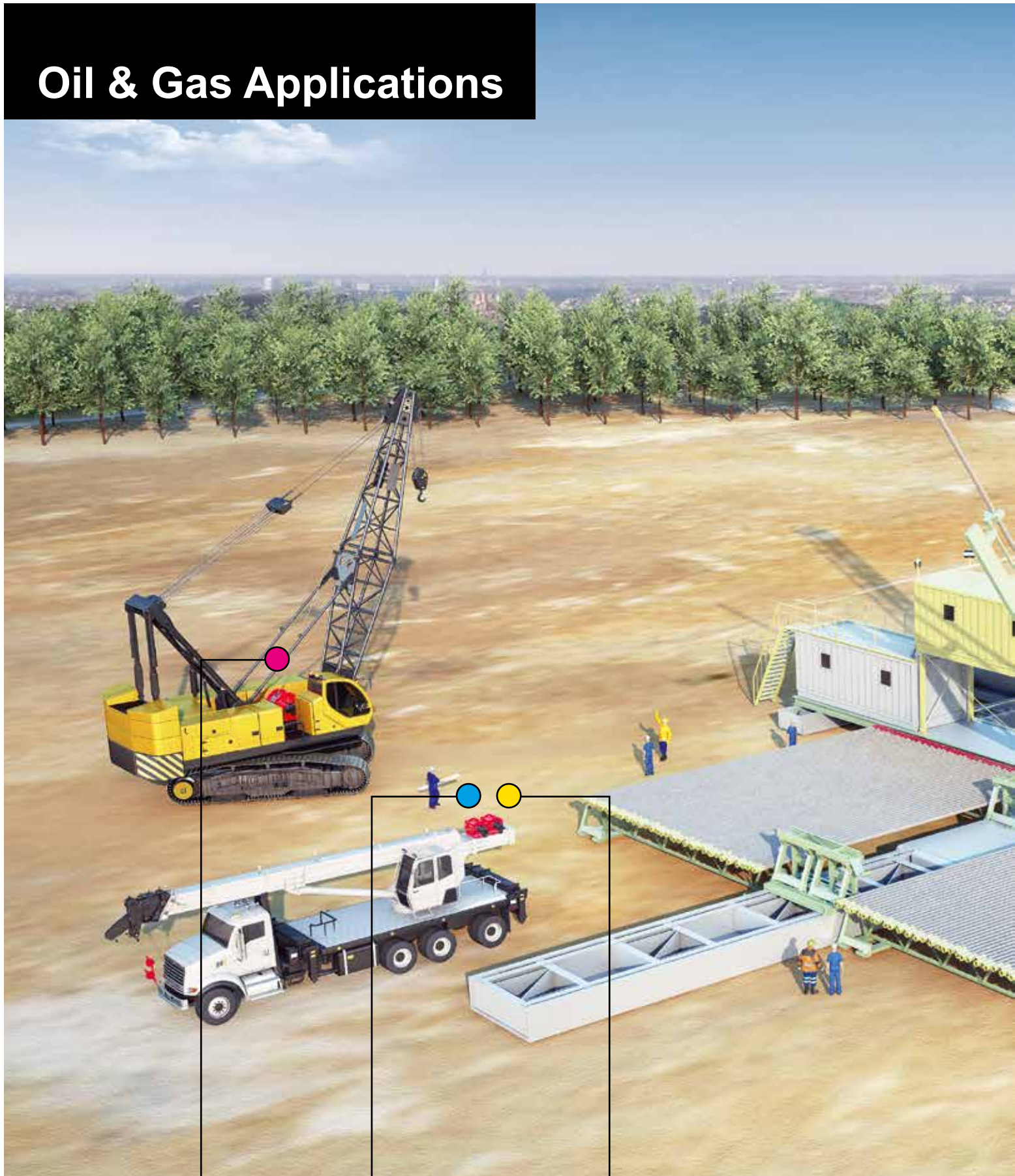
Dinamic Oil provides a full range of winches interchangeable in performance and size to traditional US Manufacturers. All winches are manufactured in Italy and tested in the USA at our subsidiary in Charlotte, North Carolina. The most common applications: mobile, drilling, Oil & Gas, marine offshore and construction.



Type	max line pull on the last layer	lifting pressure	Max lifting speed	Max oil flow	Rope Quantity
	daN	bar	m/min	l/min	m
A					
A11	890	2250	200	7,7	165
A18	1450	2300	125	7,7	165
A24	2000	2450	98	7,7	97
A30	2500	2250	167	15	97
A44	3350	2450	184	20	173
A55	4300	2550	78	10	84
A60	4900	2650	126	17	124
A62-3	3600	2450	150	21	302
A62-4	3600	2100	371	60	302
A80	6000	2650	101	17	258
A81-5	5500	3000	407	65	338
A81-6	5500	2500	340	65	407
A120-4	8720	2570	227	65	407
A150-5	10900	2550	255	80	400



Oil & Gas Applications



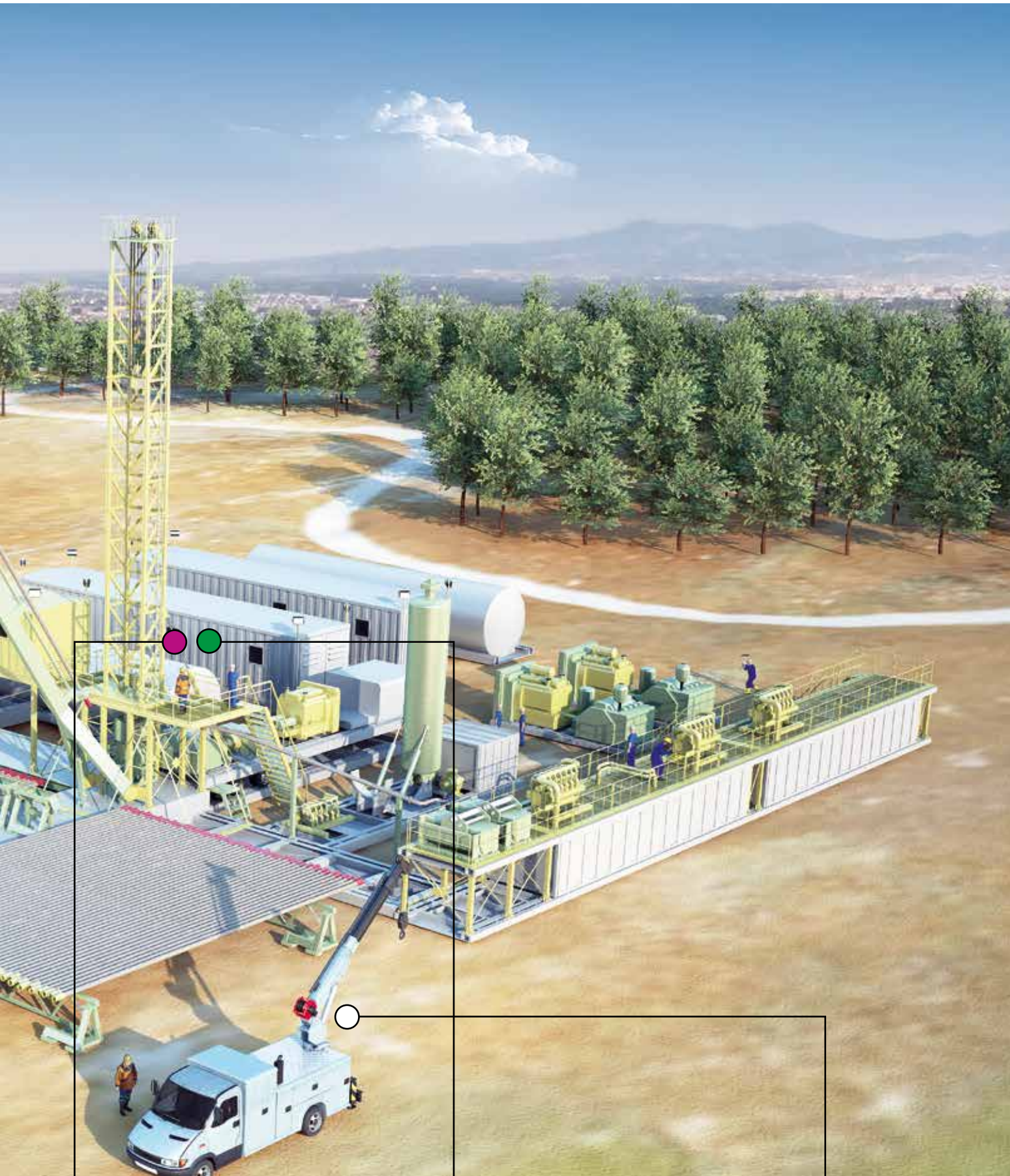
● SWD F150



● A150



● A150



● A120



● A81



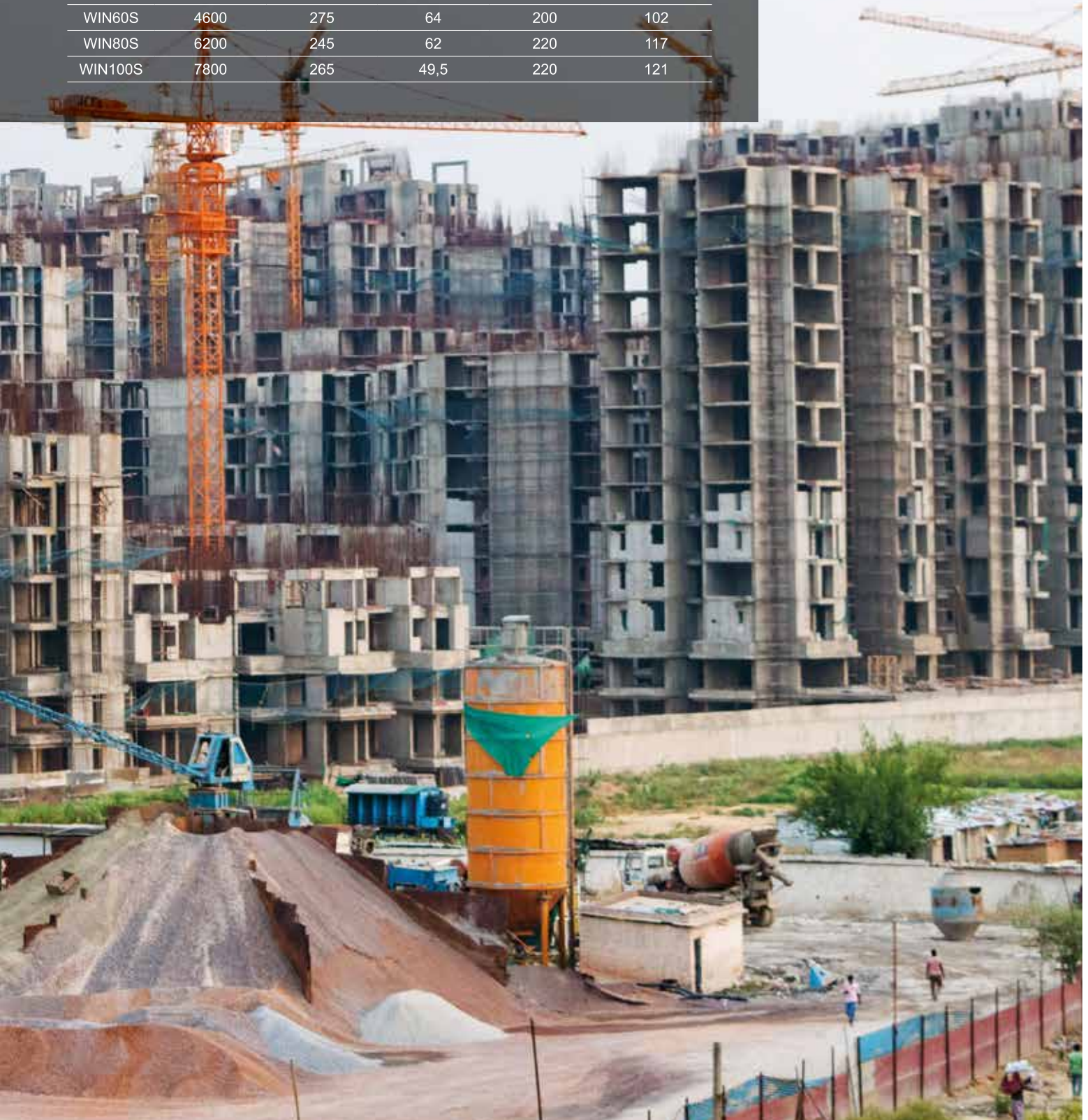
● NP 08

Indian Series

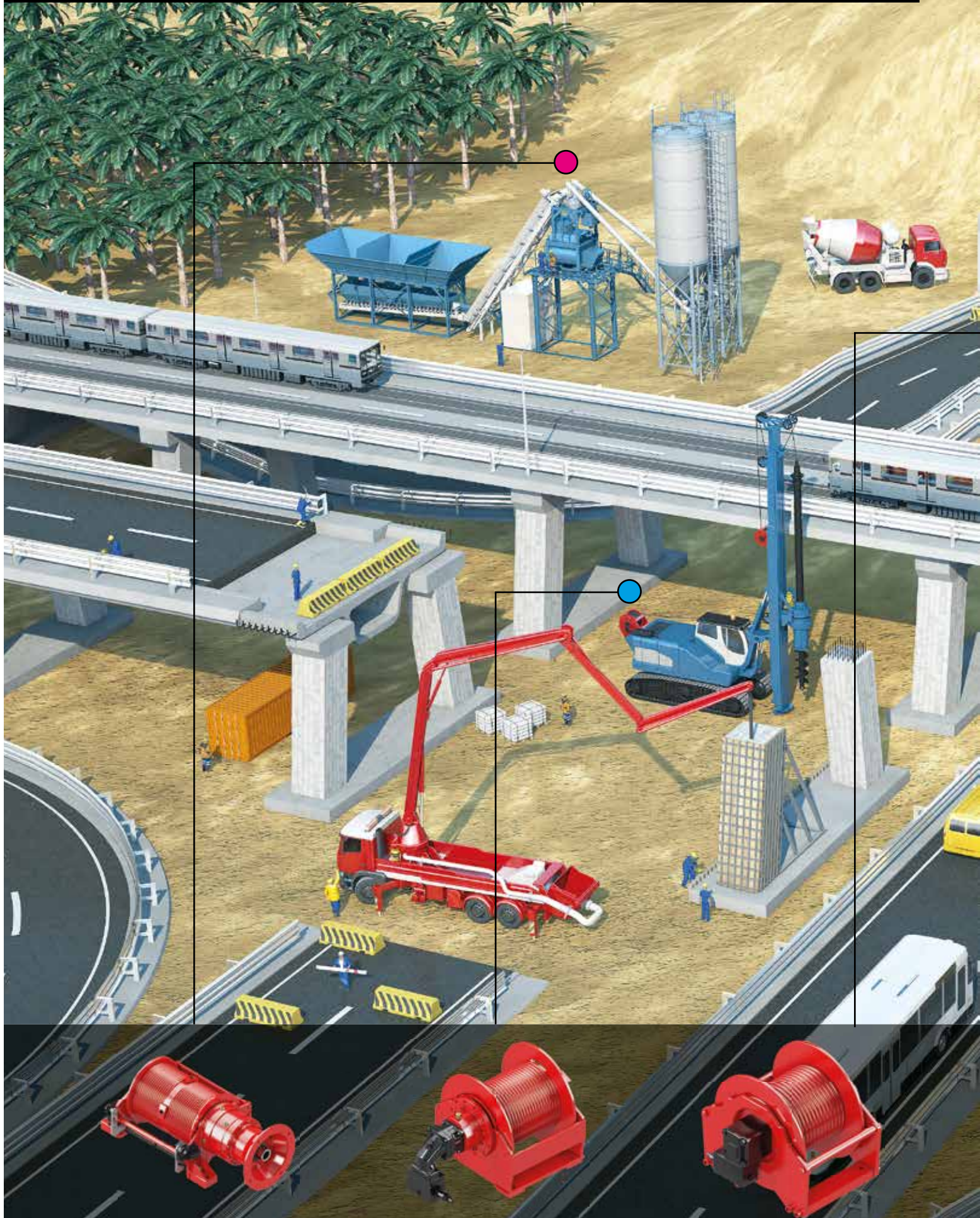
Dinamic Oil established a production facility in 2008 in New Delhi that produces a complete range of winches dedicated to the Indian Market. The most common applications: Mobile, Construction, Earth Moving, Drilling and Tower Cranes.



Type	max line pull on the last layer	lifting pressure	Max lifting speed	Max oil flow	Rope Quantity
	daN	bar	m/min	l/min	m
WIN					
WIN07	660	130	78,5	60	92
WIN15	1250	135	54,5	75	66
WIN20	1730	125	34,5	75	56
WIN25-2	1900	155	40	75	57,5
WIN25-2L	1900	155	40	75	113
WIN35-4ES	2650	205	46	95	60
WIN40	3300	195	36	95	81,5
WIN45	3500	210	38,5	100	83
WIN45S	3500	235	79	190	83
WIN55	4300	230	33,5	100	102
WIN60S	4600	275	64	200	102
WIN80S	6200	245	62	220	117
WIN100S	7800	265	49,5	220	121



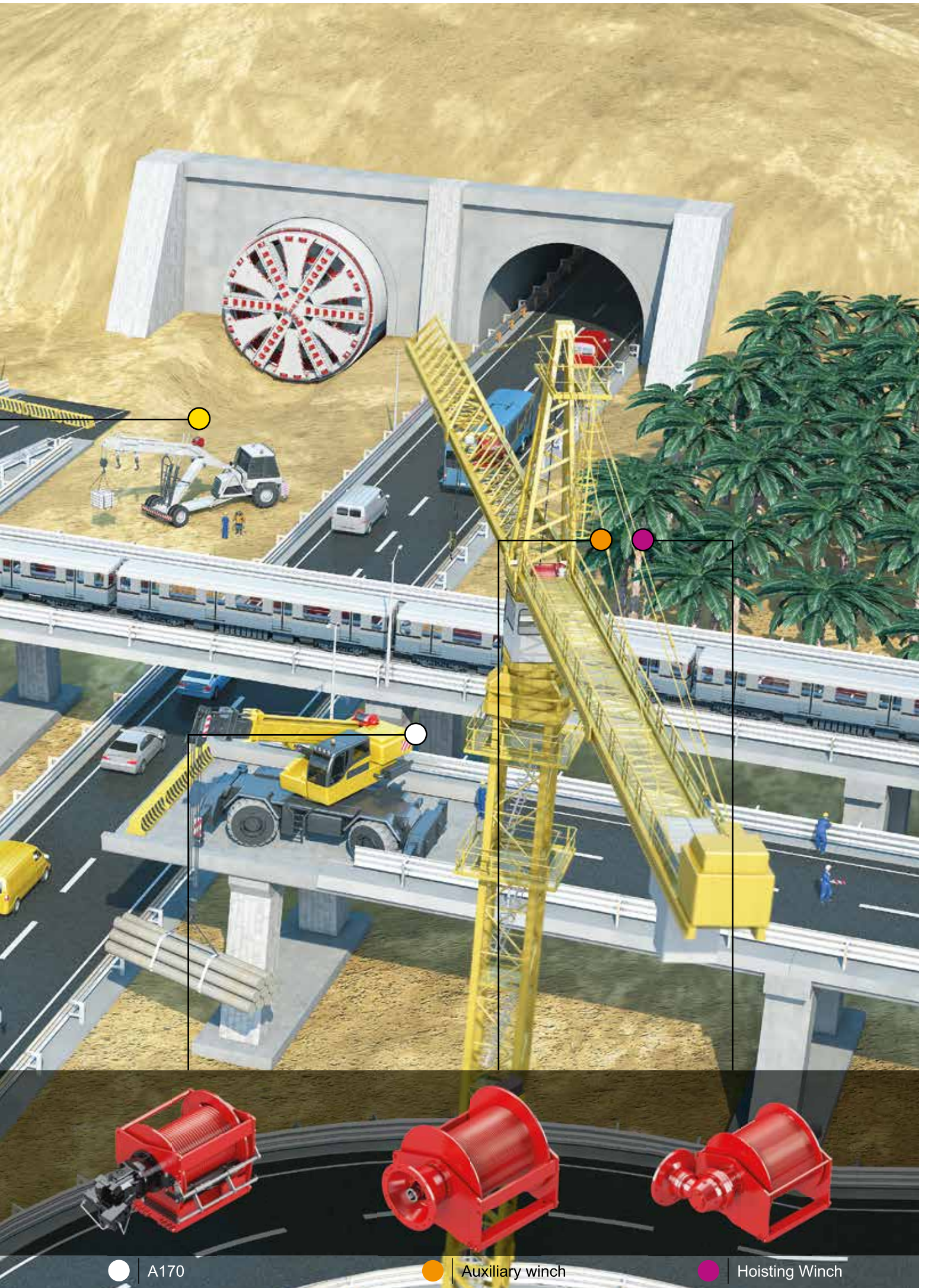
Constructions & Earthmoving Applications



● Skip Model

● S45V

● Win 25



A170

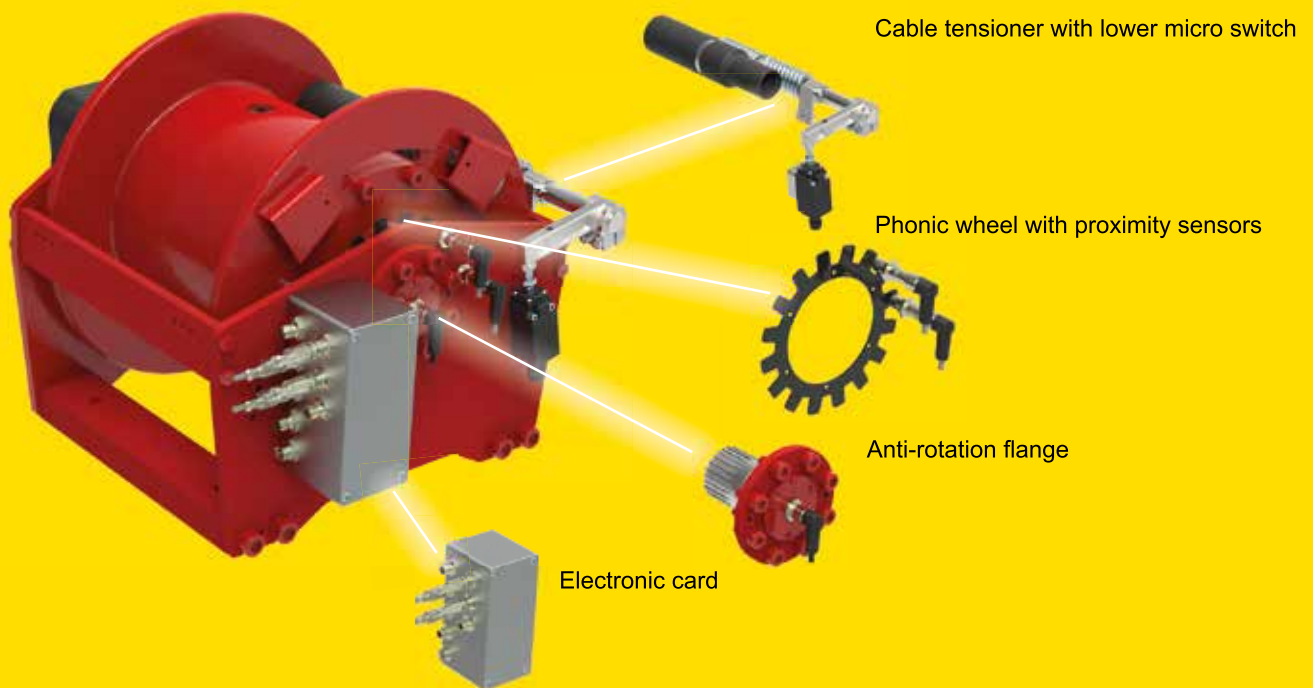


Auxiliary winch



Hoisting Winch

ELD New Electric Load Detection System



Dinamic Oil's New Electronic Load Detection system (**ELD**) is to be mounted on the winch structure according to the customer's requirements. The Electronic Load Detection System (**ELD**) allows the load control of the crane's winch while displaying its value on the remote control marking every movement easy and safe. This new system can use an analog or digital signal to control lifting, lowering load and torque.

Output Data

- Calculated hoisting load [kg]
- Drum speed [rpm]
- Rotation direction [Clockwise or Counterclockwise]
- Working layer [no.]
- Pre Alarm [Orange LED]
- Alarm [Red LED]

Options

- 4 ÷ 20 mA proportional to the torque value
- Customize versions

dinamic oil

TD System Torque Detector



The new TD - Torque Detection System provides a digital gearbox torque signal with less than 2% of error. The Integrated sensor can be inserted as an accessory into the intermediary flange and therefore will not modify standard gearbox dimensions or length.

The output signal is in mA and ranges between 4 and 20 mA.

Advantages:

It does not modify the gearbox IP Class

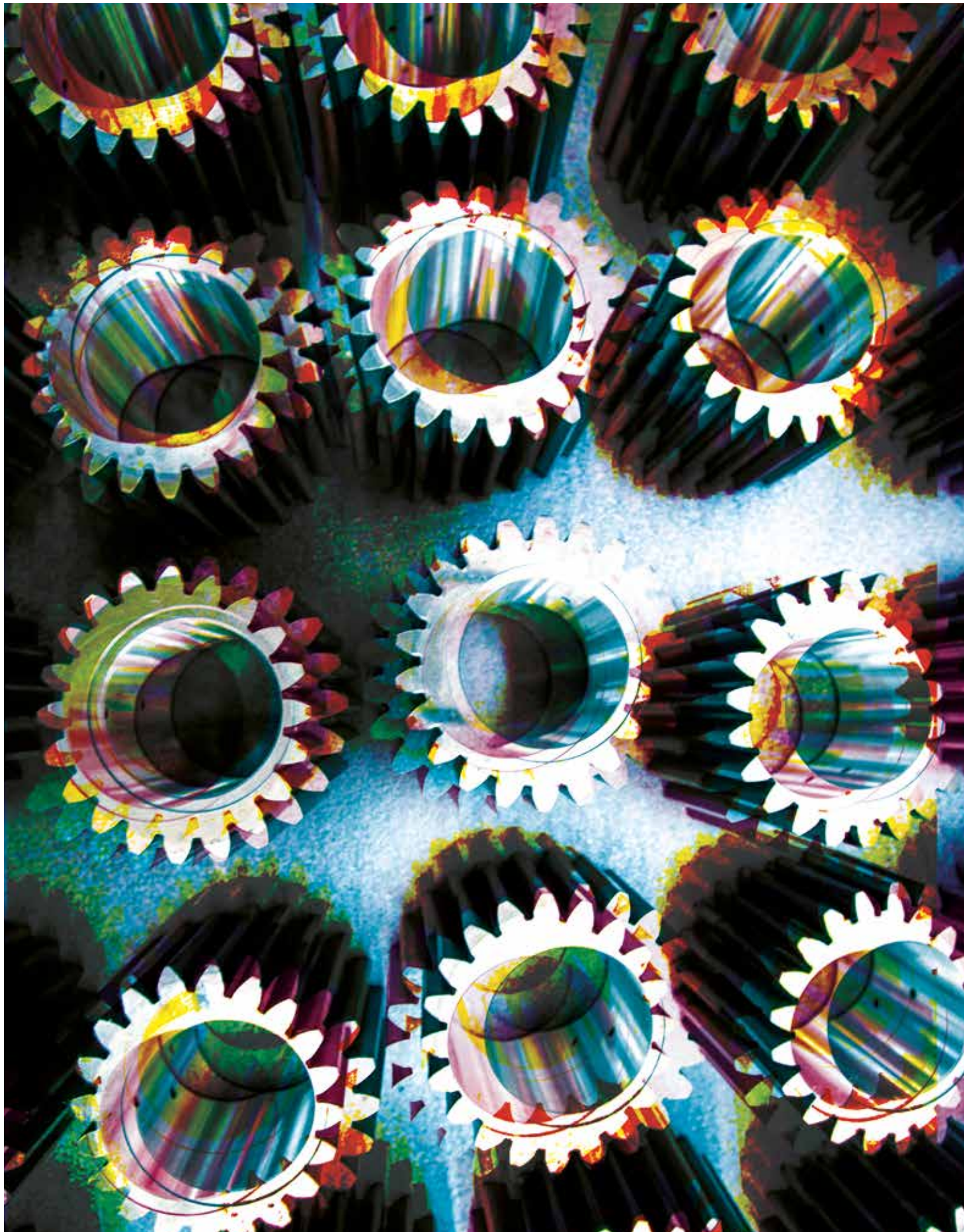
The signal can be manipulated to remove errors due to elasticity or temperature

The system can be added as an accessory to existing product

It can provide a bi directional torque signal

The TD System is available with an electronic card configured for Modbus or CANopen outputs.

dynamic oil



Dinamic Oil reserves the right to implement modifications without notice.
This catalogue cannot be reproduced, even partially, without prior consent.
March 2019

Coordination: Marketing Department Dinamic Oil
3D illustrations: Phil Studium, Modena
Print: Modulo Sei, Camposanto, Modena
Photo: Van Maartens

Graphic and Design
Massimiliano Marrani
All rights reserved ©